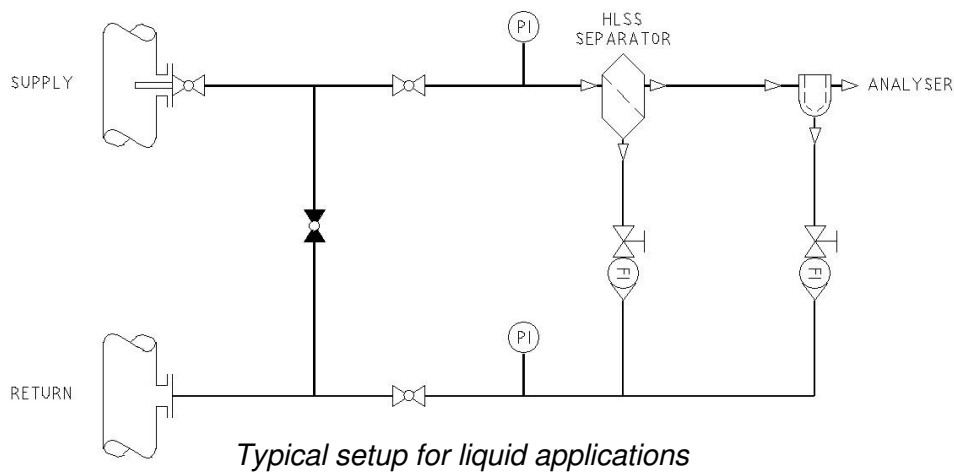




High Pressure & Temperature Membrane Filter

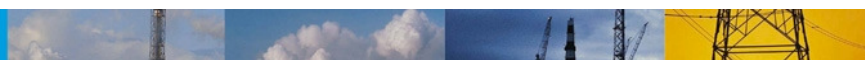
As the demand for filtering on higher pressures and temperatures is increasing, Hobre has developed a new High Pressure filter housing combined with a large surface membrane filter to meet this requirement.

The combination of Hobre's HLSS Separator with this High Pressure Membrane Filter will improve separation efficiency; HLSS Separator will do 99 % of the water removal, including most of the particles, as bypass filter. The High Pressure Filter housing, with membrane filter, will filter the last particles. A clean and representative sample is ready for analysis.



Advantages are:

- High pressure,
- High temperature,
- High flow rates,
- Improved separation.

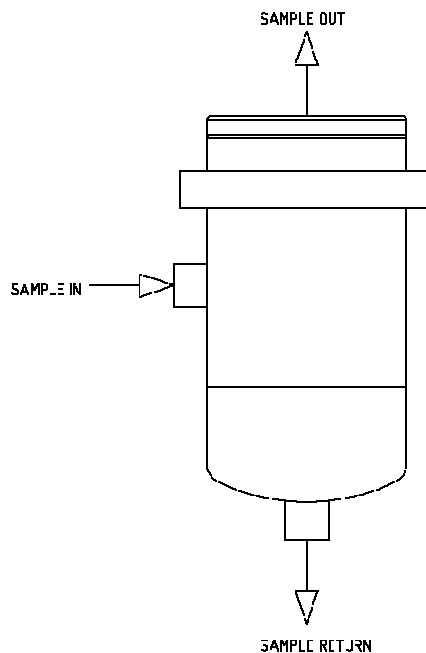




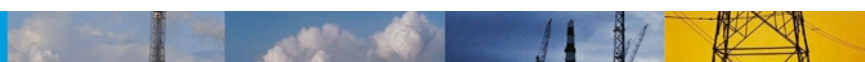
SPECIFICATIONS

Model	HP filter housing : HI-100505 Filter element : HI-006505 (0,2 Micron, Kalrez "O" ring) : HI-100235 (1 Micron, Teflon Encapsulated Viton "O" ring)
Body Material	316 Stainless Steel
Filter Material	PTFE
Recommended flow rate	0 to 15 l/min
Operating conditions	
Maximum pressure	40 barG
Maximum temperature	70 °C
Connections	
Inlet	1/4 " NPT
Outlet	1/4 " NPT
Analyser sample outlet	1/4 " NPT
Dimensions (D x H)	989 x 171 mm

All filters comply with the PED directive 97/23/EG category Art. 3, par. 3 module SEP.



Connection drawing:





MEMBRANE FILTER



Description

The membrane filter has an all fluoropolymer construction utilizing pleated filter media. It is designed for the filtration of aggressive process fluids.

- Excellent compatibility
- All fluoropolymer construction
- High temperature and pressure capabilities
- Integrity testable
- Two configurations available
- Optimized design
- High flow rates
- Low extractables
- Manufactured in a cleanroom environment
- 100% integrity tested

Specifications

Materials

- Medium: PTFE
- Core, cage, and end caps: PFA 440 HP
- Support and drainage: FEP bonded PTFE
- Sealing methods: Patented melt seal process
- O-ring options: Teflon™ encapsulated and Kalrez™
- Stainless steel outer ring on HI-100235

Removal Ratings

- 1 µm, 0.2 µm

Filter Areas

- 0.07 m² per HI-006505 cartridge
- 0.17 m² per HI-100235 cartridge

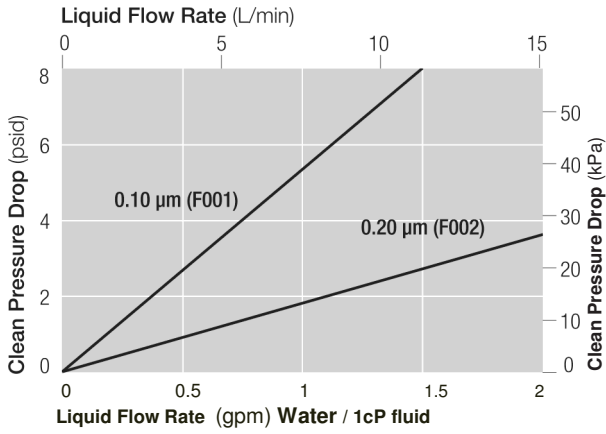
Operating Conditions

- Maximum operating temperature: 185°C
- Maximum forward differential pressure:
 - 0.69 MPa @ 50°C;
 - 0.41 MPa @ 51°-110°C;
 - 0.24 MPa @ 111°-170°C;
 - 0.14 MPa @ 170°-185°C

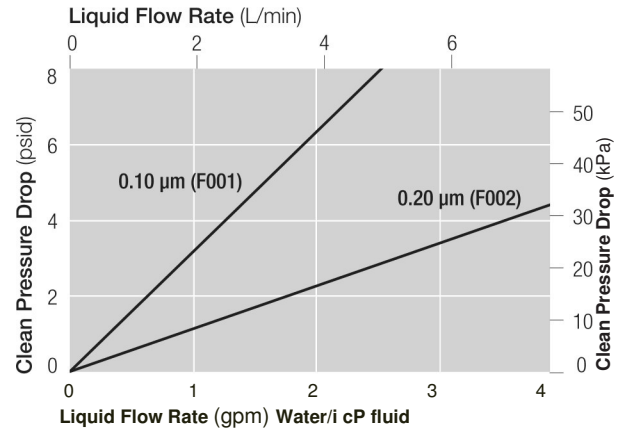




Pressure Drop vs. Liquid Flow Rate*



Cartridge Style HI-006505



Cartridge Style HI-100235

* For liquids with viscosity differing from water multiply the pressure drop by the viscosity in centipoise.

